

SSLGR16 SERIES • 120V • LED MR16



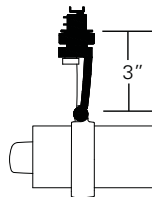
The sleek and minimalist SSLGR16 series spotlight is integrated with a low-profile fitting

- Designed for self-ballasted MR16 GU10 base LED lamp up to 8 watts
- Die-cast aluminum housing
- Wrench locking in all horizontal and vertical planes
- On/off safety switch (on -00 Track and Busway fitting)
- Lamp ring is easily opened for relamping
- Lamp housing capable of holding two SORAA snap accessories (by others) and up to two additional rimless screens or gels
- Integral clear Pyrex safety shield
- Finishes: LSI Black, White, and Silver
- Fixture weight: 1.0 lb.

MOUNTING OPTIONS

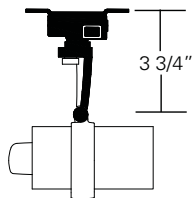
SSLGR16-00

Lexan Fitting for 1 and 2 circuit LSI Track. With On/Off switch.



SSLGR16-BUS

Lexan fitting for 1 and 2 circuit LSI Busway. With On/Off switch.

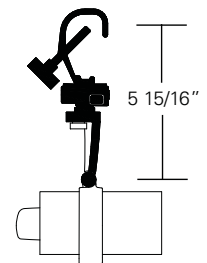


SSLGR16-2G

Universal fitting for Unistrut Systems and any screw or bolt-up applications. With switch, 6-foot 3-wire grounding cord and NEMA 5-15P plug.

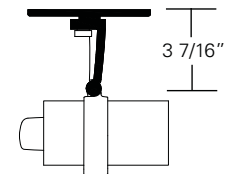
SSLGR16-3G

C-clamp for pipes from 5/8" to 2" O.D. With switch, 6-foot 3-wire grounding cord and NEMA 5-15P plug.



SSLGR16-5A

Canopy for permanent mounting on standard 4" octagonal junction boxes.



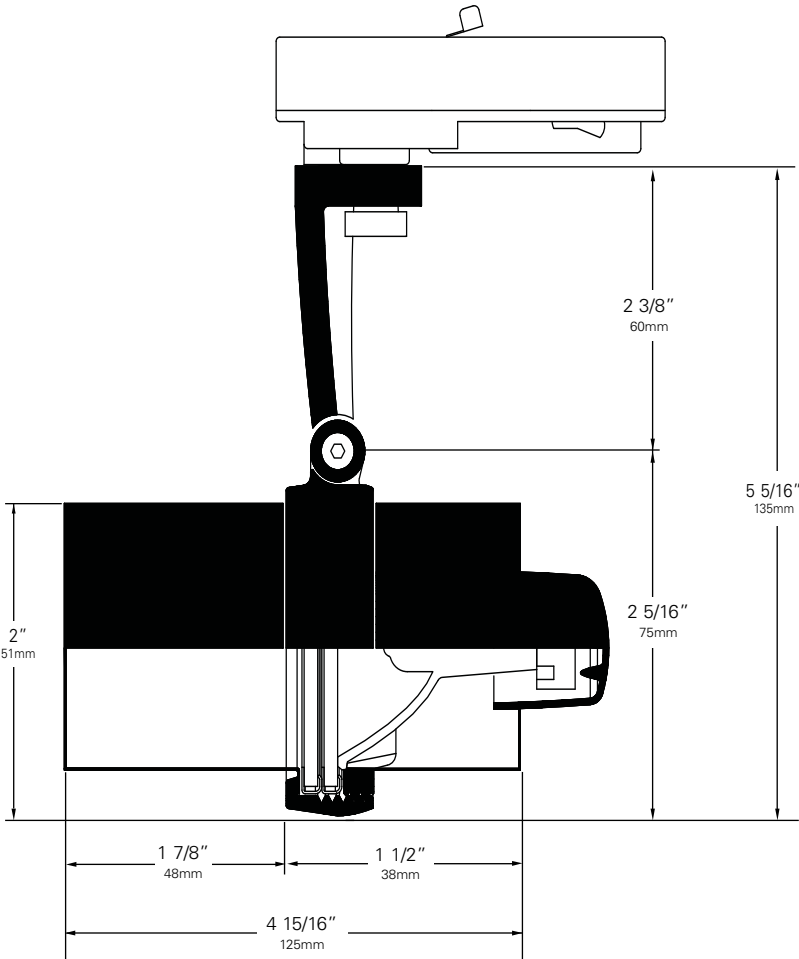
Other Options (Consult Factory):

- Custom stems, specify length (4" – 48")
- Custom color, RAL palette
- Security/Worklight Fixture, add suffix **EF**. For use with -EF00 (Track) and -EFBUS (Busway) mounting options only.

ORDERING INFORMATION

1. Select your **Mounting Option**.
2. Choose a **Finish** for your fixture:
All Black (**BB**) All White (**WW**) All Silver (**SS**)
Black ring and lamp cap with silver front and back (**BS**)
Black ring and lamp cap with white front and back (**BW**)
Silver ring and lamp cap with black front and back (**SB**)
White ring and lamp cap with black front and back (**WB**)
Example: **SSLGR16** — **00** **BS**
FIXTURE FITTING FINISH

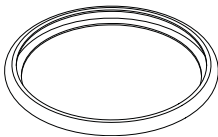
3. Don't forget your **Accessories!**
LSI features the widest range of accessories in the industry to help you modify the light's intensity, color, texture and pattern.



MR16 LAMPS

LED	Spread	CBCP	
7.5	10°	6000	SM16GA-07-10D-930-03
7.5	25°	2400	SM16GA-07-25D-930-03
7.5	36°	1130	SM16GA-07-36D-930-03
7.5	60°	460	SM16GA-07-60D-930-03

ACCESSORIES



Other accessories:
• Color and Spread Gels AAA

Backer Ring AAAB

Stainless steel ring to hold thin film gels when no other size AAA accessories are being used.

SSLGR16 • PHOTOMETRIC DATA

SORAA LED GU10 Lamp

SM16GA-07-10D-930-03

7.5 watt, 35000 hrs

Beam Spread to 50% of CBCP **10°**Center Beam Candlepower **6000**Color Temperature (Kelvin) **3000**

SORAA LED GU10 Lamp

SM16GA-07-25D-930-03

7.5 watt, 35000 hrs

Beam Spread to 50% of CBCP **25°**Center Beam Candlepower **2400**Color Temperature (Kelvin) **3000**

SORAA LED GU10 Lamp

SM16GA-07-36D-930-03

7.5 watt, 35000 hrs

Beam Spread to 50% of CBCP **36°**Center Beam Candlepower **1130**Color Temperature (Kelvin) **3000**

SORAA LED GU10 Lamp

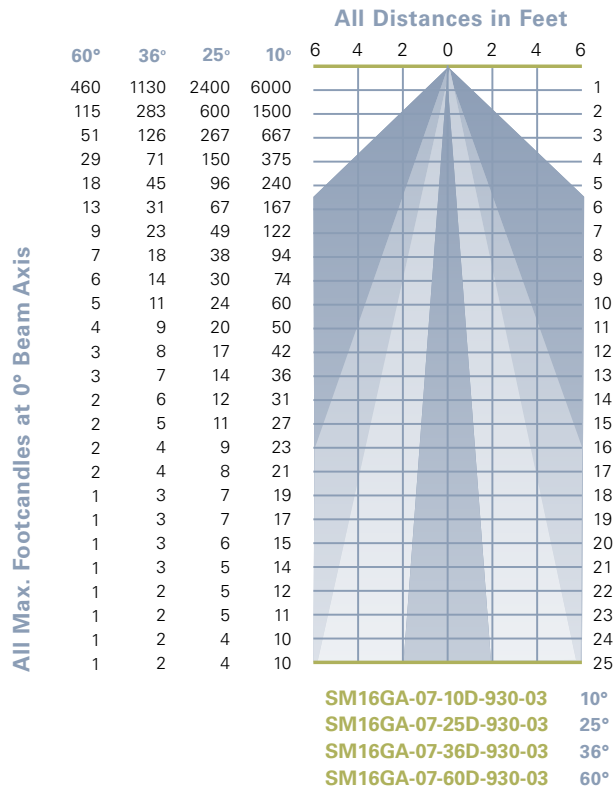
SM16GA-07-60D-930-03

7.5 watt, 35000 hrs

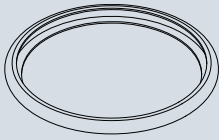
Beam Spread to 50% of CBCP **60°**Center Beam Candlepower **460**Color Temperature (Kelvin) **3000**

Abbreviations used:

- CBCP = Center Beam Candlepower
- /C/ = Constant Color



SSLGR16 • ACCESSORIES



BACKER RING AAA

Stainless steel ring to hold thin film gels when no other size AAA accessories are being used.

SOLID STATE • COLOR MEDIA

COLOR MEDIA

As the foremost innovator in accent lighting, LSI offers a complete range of permanent fade-free glass color filters, which are available in nine stock diameters. All glass color filters are rimmed in a seamless aluminum ring and are slotted for heat expansion. In addition, LSI has available a Color Filter Sample Kit, Light Blocking Screens, OPTIVEX™ Glass UV Filters and Special Lenses. All are described in detail below.



Size	Diameter	LSI Fixture Series
AAA	2 3/8"	LumeLEX® 2030/2031, SSLGR16
AA	3"	LumeLEX® 2024 (with LX2024-Holder or LX2024-Barndoor), LumeLEX® 2026, LumeLEX® 2044
A	3 1/2"	LumeLEX® 2060, SSL230
C	4 3/4"	SSL238, SSLGR38, LumeLEX® 2084

Special Glass Color Filters

LSI will fabricate, on special order, glass color filters in most sizes and shapes.

FS4 — Color Filter Samples

To facilitate selection of glass color filters, LSI supplies a complete set of 1 3/4" X 1 3/4" labeled glass and dichroic samples in a handy carrying case.

Multicolor® Filters

Unique LSI four color glass filters create rich exciting blended color effects on all objects with brilliant four color fringed shadows on background.

No.	Glass Colors Used
760	910/930/944/921
761	910/930/921/944
762	944/921/910/930
763	944/930/910/921
764	921/944/910/930

Duocolor® Filters

LSI two color glass filters blend to form one unique color that previously could only be achieved by using two separate color filters in the same fixture. Two color fringed shadows produced on background.

No.	Glass Colors Used
770	910/944
771	910/921
772	910/930
773	944/933
774	921/930
775	930/933
776	910/948

Notes:

1. Values given are approximate due to slight variations in glass color and thickness.

No.	Color	% of Light Transmission
902	Medium Pink	36
903	Deep Pink	37
904	Flesh Pink	73
906	Pale Lavender	14
907	Surprise Pink	19
908	Lilac	21
910	Warm Red	10
911	Strawberry	6
912	Ruby	4
913	Magenta	1
914	Light Amethyst	25
915	Medium Amethyst	16
916	Deep Amethyst	4
917	Olive	18
918	Light Green	68
920	Medium Green	25
921	Deep Green	7
922	Silver green	65
923	Yellow Green	49
924	Emerald Green	12
925	Light Turquoise	68
926	Medium Turquoise	40
927	Deep Turquoise	17
928	Light Blue	34
930	Medium Blue	3
932	Daylight	59
933	Gene Moore Blue	18
936	Grey	56
937	Light Blue Green	17
939	Light Amber	68
940	Medium Amber	48
941	Deep Amber	43
942	Straw	78
943	Gold	87
944	Canary Yellow	84
945	Lemon	81
946	Pumpkin	32
947	Tangerine	20
948	Orange	23
949	Pink Gold	54
950	Bronze	48
951	Brass	11
952	Autumn Tan	11
953	Leaf Brown	19
954	Butter Pecan	3
955	Toasted Almond	1

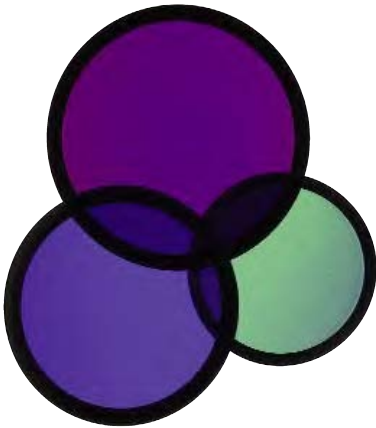
SOLID STATE • COLOR MEDIA

DICHROIC COLOR FILTERS

In addition to our complete line of glass color filters, LSI now offers dichroic glass color filters that achieve purer, more saturated, richer color by selective wavelength transmission. Since these filters reflect rather than absorb the unwanted color wavelengths, a higher intensity of colored light can be obtained with fewer or lower wattage fixtures. In addition, this selective transmission allows for very accurate color matching from filter to filter.

All standard LSI filter sizes are available in a wide palette of well chosen dichroic colors that can be used with all LSI fixtures that accept accessories.

LSI dichroic glass color filters have the added benefit of being rimmed for extra durability to allow for frequent usage without fear of breakage or edge chipping.



Size Diameter LSI Fixture Series			Technical Data	No. Color % of Light Transmission		
AAA	2 3/8"	LumeLEX® 2030/2031, SSLGR16	<p>Dichroic color filters are created in a vacuum chamber by multi-layer vapor deposits of different minerals onto low expansion, chemically resistant Borosilicate glass.</p> <p>Deposits are made in alternating layers of varying microscopic thickness which allow very narrow color wavelengths to be selectively transmitted and all other wavelengths to be reflected.</p> <p>LSI does not recommend using dichroic color filters with lamps or fixtures that have beam spreads greater than 40° because a secondary color aura is created by the wide angular transmitted wavelengths that are different than the desired color wavelength.</p> <p>Since there is mainly transmission and reflection of the color wavelengths by the dichroic filter and very little absorption, the dichroic filter can be used with many high temperature lights that normally would not accept color filters.</p>	2001	Light Pink	69
AA	3"	LumeLEX® 2024 (with LX2024-Holder or LX2024-Barndoor), LumeLEX® 2026, LumeLEX® 2044		2002	Medium Pink	43
				2003	Hot Pink	11
				2004	Pale Pink	55
A	3 1/2"	LumeLEX® 2060, SSL230		2010	Deep Magenta	29
				2011	Lavender	24
				2012	Vivid Magenta	31
C	4 3/4"	SSL238, SSLGR38, LumeLEX® 2084		2013	Lavender Accent	48
				2014	Lilac	37
				2015	Purple Fusion	12
				2020	Sky Blue	39
				2021	Sea Blue	39
				2022	Cyan	33
				2023	Light Blue Green	30
				2024	Primary Blue	24
				2025	Medium Red Blue	15
				2026	Deep Purple	16
				2027	Peacock Blue	53
				2028	Mediterranean Blue	20
				2029	Boost Blue	51
				2040	Light Yellow Green	64
				2041	Fern Green	47
2042	Turquoise	35				
2043	Primary Green	31				
2044	Industrial Green	64				
				2050	Yellow	80
				2051	Amber	71
				2052	Amber Blush	38
				2053	Bastard Amber	71
				2054	Goldenrod	63
				2055	Bright Straw	56
				2060	Medium Orange	51
2061	Orange	44				
2070	Flame Red	27				
2071	Primary Red	25				
Special Glass Color Filters						
LSI will fabricate, on special order, dichroic glass color filters in most sizes and shapes not exceeding a 13" diameter circle overall.						
FS4 — Color Filter Samples						
To facilitate selection of glass color filters, LSI supplies a complete set of 1 3/4" X 1 3/4" labeled glass and dichroic samples in a handy carrying case.						

SSLGR16 SERIES • GELS

As the foremost innovator in accent lighting, LSI offers a complete range of pre-cut Gels to modify the color and distribution of light.



SPREAD GELS

Size: AAA (60mm diameter)	Spread Gel
GEL-L1-AAA	1° Spread Gel
GEL-L5-AAA	5° Spread Gel
GEL-L10-AAA	10° Spread Gel
GEL-L20-AAA	20° Spread Gel
GEL-L30-AAA	30° Spread Gel
GEL-L40-AAA	40° Spread Gel
GEL-L60-AAA	60° Spread Gel
GEL-L80-AAA	80° Spread Gel
GEL-L30B5-AAA	30° by 5° Spread Gel
GEL-L40B2-AAA	40° by 0.2° Spread Gel
GEL-L60B1-AAA	60° by 1° Spread Gel
GEL-L60B10-AAA	60° by 10° Spread Gel
GEL-L75B45-AAA	75° by 45° Spread Gel
GEL-L90B60-AAA	90° by 60° Spread Gel
GEL-R101-AAA	Beam Softener

COLOR GELS

Size: AAA (60mm diameter)	Gel Color	Size: AAA (60mm diameter)	Gel Color
GEL-R7-AAA	Pale Yellow	GEL-R3204-AAA	Half Blue
GEL-R12-AAA	Straw	GEL-R331-AAA	Shell Pink
GEL-R13-AAA	Straw Tint	GEL-R383-AAA	Sapphire Blue
GEL-R14-AAA	Medium Straw	GEL-R397-AAA	Pale Grey
GEL-R21-AAA	Golden Amber	GEL-R2001-AAA	Storaro Red
GEL-R25-AAA	Orange Red	GEL-R2004-AAA	Storaro Green
GEL-R26-AAA	Light Red	GEL-R2009-AAA	Storaro Violet
GEL-R27-AAA	Medium Red	GEL-R3202-AAA	Full Blue
GEL-R57-AAA	Lavender	GEL-R3206-AAA	Third Blue
GEL-R71-AAA	Sea Blue	GEL-R3216-AAA	Eighth Blue (Boosts 3200K to 3300K)
GEL-R72-AAA	Azure Blue	GEL-R3318-AAA	Tough 1/8 Minusgreen
GEL-R91-AAA	Primary Green	GEL-R3410-AAA	Roscosun (1/8 CTO) (Reduces 5500K to 4900K)
GEL-R97-AAA	Light Grey	GEL-R3441-AAA	Full Straw (CTS)
GEL-R98-AAA	Medium Grey	GEL-R3443-AAA	Quarter Straw (CTS)
GEL-R101-AAA	Light Frost	GEL-R4330-AAA	CalColor 30 Cyan
GEL-R104-AAA	Tough Silk	GEL-R4415-AAA	CalColor 15 Green
GEL-R119-AAA	Lt. Hamburg Frost	GEL-R4490-AAA	CalColor 90 Green
GEL-R121-AAA	Blue Diffusion	GEL-R4860-AAA	CalColor 60 Pink
GEL-R305-AAA	Rose Gold	GEL-R4890-AAA	CalColor 90 Pink
GEL-R312-AAA	Canary	GEL-R4930-AAA	CalColor 30 Lavender