

LED Steplites

Quick Reference Guide

Cole LED Steplites are equipped with high performance modules and integral drivers. Cole LED Steplites can be modified to fit almost any interior or exterior application.

Most models have exceptional durability provided by heavy-duty cast aluminum or stainless steel faceplates and tempered glass diffusers. Many Cole Steplites also feature a cast aluminum junction box which may be easily field mounted to either the back or bottom of the housing to best suit installation conditions.

Modified or custom Steplites may also be developed to meet your exact specifications.

To learn more about our custom capabilities and comprehensive range of standard lighting fixtures, call us directly or contact your local Cole representative.

L600 Series



L500 Series



L131 Series



L121 Series



C1392D Series



COLE
Lighting

C.W. Cole & Company, Inc.
2560 N. Rosemead Boulevard
South El Monte, CA 91733-1593

Tel. (626) 443-2473
Fax (626) 443-9253
info@colelighting.com
www.colelighting.com

121 SERIES

Ultra compact Steplite. Stainless steel faceplate and housing. Opal or frosted tempered glass diffuser. Indoor or outdoor use.

Dimensions: H: 3", W: 3-1/8"

LED: 3000K CCT, CRI>80

DRIVER: integral

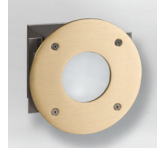
3.4 watts, 230 lumens



L121SW-OPL



L121S-NH-OPL



L121RW-B



L121SW-LVR

131 SERIES

Compact directional Steplite. Cast aluminum cutoff eyelid faceplate. Powder coat steel housing. Indoor or outdoor use.

Dimensions: 3-1/2" dia.

LED: 3000K CCT, CRI>80

DRIVER: integral

2.5 watts, 145 lumens



L131W-WHT-TP

141 SERIES

Low-profile directional aisle light. Cast aluminum cutoff hood faceplate. Powder coat steel housing. Indoor or outdoor use.

Dimensions: H: 3", W: 3-7/8"

LED: 3000K CCT, CRI>80

DRIVER: integral

3.4 watts, 230 lumens



L141-TP

150 SERIES

Special purpose Steplites. Steel or stainless steel faceplates. Powder coat steel housings. Indoor use only.

Dimensions: see photo captions

LED: 3000K CCT, CRI>80

DRIVER: integral

2.5 watts, 145 lumens

3.4 watts, 230 lumens



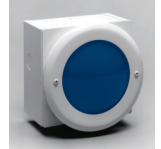
L150H-N
2-5/8" x 4-3/8"



L150E
5-3/8" D.



L150G-RED
5-3/8" Sq.



L150G/PA-BLU
5-3/8" D.

153 SERIES

Compact Steplite. Cast aluminum faceplate. Powder coat steel housing. Indoor or outdoor use.

Dimensions: 4-1/2" dia.

LED: 3000K CCT, CRI>80

DRIVER: integral

3.4 watts, 230 lumens



L153W

157 SERIES

Recessed or surface Steplites cast aluminum faceplate. Powder coat steel housing. Indoor and outdoor use.

Dimensions: H: 4-3/4", W: 7-7/8"

LED: 3000K CCT, CRI>80

DRIVER: integral

1.5 watts, 126 lumens

3.6 watts, 215 lumens

7.2 watts, 430 lumens



L157W-J



L157GW-J



SL157W



L157W-2S-SCL-BLK

158 SERIES

Brick size Steplites. Cast aluminum faceplate. Powder coat steel housing. Indoor and outdoor use.

Dimensions: H: 4", W: 8-1/2"

LED: 3000K CCT, CRI>80

DRIVER: integral

1.5 watts, 126 lumens

3.6 watts, 215 lumens

7.2 watts, 430 lumens



L158W-J



L158GW-J



L158W-N-J
Stainless Steel

159 SERIES

Low profile step riser fixture. Cast aluminum faceplate. Powder coat steel housing. Indoor and outdoor use.

Dimensions: H: 2", W: 10"

LED: 3000K CCT, CRI>80

DRIVER: integral

1.5 watts, 126 lumens

3.6 watts, 216 lumens



L159W

180 SERIES

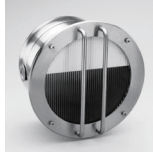
Large round spread lens Steplites. Spun stainless steel faceplate and housing. Flat or convex spread lense. Indoor and outdoor use.

Dimensions: 7" dia.

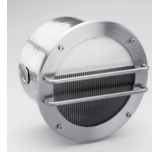
LED: 3000K CCT, CRI>80

DRIVER: integral

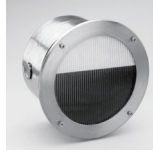
10.2 watts, 630 lumens



L181VW



L181HW



L183W



L184W

280 SERIES

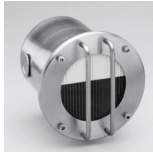
Small round spread lens Steplites. Spun stainless steel faceplate and housing. Indoor and outdoor use.

Dimensions: 4-1/2" dia.

LED: 3000K CCT, CRI>80

DRIVER: integral

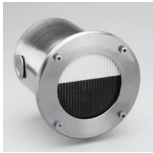
3.4 watts, 230 lumens



L285VW



L285HW



L286W



L287W

500 SERIES

Ultra low profile Steplites. Stainless steel faceplate and housing. Indoor and outdoor use.

Dimensions: see photo captions

Lamp

LED: 3000K CCT, CRI>80

DRIVER: integral

L503W - 1.5 watts, 126 lumens

L506W - 3.0 watts, 252 lumens

L509W - 4.5 watts, 377 lumens

L512W - 6.0 watts, 503 lumens



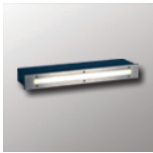
L503W

1-9/16" x 6-3/4"



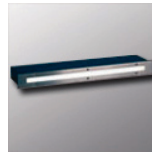
L506W

1-9/16" x 9-3/4"



L509W

1-9/16" x 12-3/4"



L512W

1-9/16" x 15-3/4"

2100E SERIES

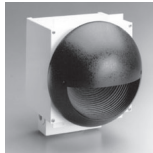
Dome style directional Steplite. Cast aluminum faceplate. Powder coat steel housing. Indoor and outdoor use.

Dimensions: D: 9-1/2"

LED: 3000K CCT, CRI>80

DRIVER: integral

10.2 watts, 630 lumens



L2100EW

252 SERIES

Versatile Steplites. Cast aluminum and stainless steel faceplates. Powder coat steel housings. Indoor and outdoor use.

Dimensions: H: 5-5/8", W: 9-3/8"

Lamp

LED: 3000K CCT, CRI>80

DRIVER: integral

1.5 watts, 126 lumens

3.6 watts, 215 lumens

7.2 watts, 430 lumens



L252W-L26-J



L252W-L26V-J



L252-N Stainless Steel



L252-N-CO-J

300 SERIES

Hybrid Steplite with door to enclose receptacles. Brass or aluminum faceplate. Powder coat steel housing. Indoor or outdoor use.

Dimensions: H: 13-1/4", W: 7-3/8"

LED: 3000K CCT, CRI>80

DRIVER: integral

3.4 watts, 230 lumens

10.2 watts, 630 lumens



TLL300W-B



TLL300W

600 SERIES

Low profile directional Steplites. Stainless steel or aluminum faceplate. Indoor and outdoor use.

Dimensions: see photo captions

Lamp

LED: 3000K CCT, CRI>80

DRIVER: integral

L603W - 1.5 watts, 126 lumens

L603W-2S - wattage and lumens are doubled for thru-wall models

L606W - 3.0 watts, 252 lumens

L609W - 4.5 watts, 377 lumens

L612W - 6.0 watts, 503 lumens

High Output

L603W - 3.6 watts, 215 lumens

L603W-2S-HO - wattage and lumens are doubled for thru-wall models

L606W - 7.2 watts, 430 lumens

L609W - 10.8 watts, 645 lumens

L612W - 14.4 watts, 860 lumens



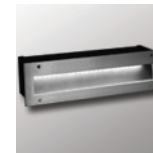
L603W-N 4"x5"



L606W-N 4"x8"



L609W-N 4"x11"



L612W-N 4"x14"



L603W-2S-N 4"x5"
Thru-wall

2120 SERIES

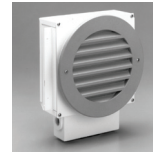
Round or square Steplites. Cast aluminum faceplates. Powder coat steel housing. Indoor and outdoor use.

Dimensions: H: 9", W: 9"

LED: 3000K CCT, CRI>80

DRIVER: integral

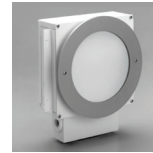
10.2 watts, 630 lumens



L2100RW-J



L2100SW-J



L2100RGW-J



L2100SGW-J

Detailed product sheets with photometric data are available for the Steplites illustrated in this overview. www.colelighting.com

2153/2153D SERIES

Large high performance Steplites. Cast aluminum faceplate. Powder coat steel housing. Indoor and outdoor use.

Dimensions: H: 7-13/16", W: 12"

LED: 3000K CCT, CRI>80

DRIVER: integral

3.0 watts, 252 lumens

7.2 watts, 430 lumens

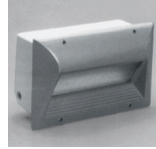
14.4 watts, 860 lumens



L2153W-J



L2153GW-J



L2153DW

2156 SERIES

Large rectangular Steplites. Cast aluminum faceplates. Powder coat steel housings. Indoor and outdoor use.

Dimensions: H: 6", W: 13-1/2"

LED:

LED: 3000K CCT, CRI>80

DRIVER: integral

4.5watts, 377 lumens

10.8 watts, 645 lumens

21.6 watts, 1290 lumens



L2156W-J



L2156GW-J



L2156VW-J



SL2156W

2158 SERIES

Low-profile Steplites. Cast aluminum and stainless steel faceplates. Powder coat steel housing. Indoor and outdoor use.

Dimensions: H: 3", W: 13-1/4"

LED: 3000K CCT, CRI>80

DRIVER: integral

4.5 watts, 377 lumens

10.8 watts, 645 lumens



L2158W-J



L2158GW-J



L2158W-N-J
Stainless Steel

2159/2159D SERIES

Low-profile rectangular Steplites. Cast aluminum faceplates. Powder coat steel housings. Indoor and outdoor use.

Dimensions: H: 4-1/2", W: 13-1/4"

LED: 3000K CCT, CRI>80

DRIVER: integral

4.5 watts, 377 lumens

10.8 watts, 645 lumens



L2159W-J



L2159GW-J



L2159DW-J-BLK

C1392/C1392D SERIES

Integrated Raillites. Stainless steel or aluminum construction. Indoor and outdoor use.

Dimensions: see photo captions

Lamp

LED: 3000K CCT, CRI>80

DRIVER: integral

C1392 - 1.5 watts, 126 lumens

C1392 - 3.6 watts, 215 lumens

C1392D-LED-2 - 1.5 watts, 126 lumens

C1392D-LED-4 - 3.0 watts, 252 lumens

High Output

C1392 - 3.0 watts, 252 lumens

C1392 - 7.2 watts, 430 lumens

C1392D-LED-2 - 3.6 watts, 215 lumens

C1392D-LED-4 - 7.2 watts, 430 lumens



C1392W-LED-2
C1392W-LED
Two sizes shown
14-3/16" x 2",
12-3/4" x 2"



C1392D-LED-2
C1392D-LED-4
2 and 4 window
12-3/4" x 2",
16-5/8" x 2"

2500 SERIES

Low-level surface wall mounted fixture. Use as a Steplite or wall sconce. Uplight, downlight, or both. Cast aluminum housing. Indoor and outdoor use.

Dimensions: H: 5", W: 14-1/8", D: 4

Recessed housing for metal halide: H: 4-3/32", W: 13-11/16", D: 3-1/2"

LED: 3000K CCT, CRI>80

DRIVER: integral

6.0 watts, 503 lumens per window

14.4 watts, 860 lumens per window



L2500W-1-ST
FannyPack

2600 SERIES

Large low-level surface wall mounted fixture. Use as a Steplite or wall sconce. Uplight, downlight, or both. Cast aluminum housing. Indoor and outdoor use.

Dimensions: H: 5", W: 20"

LED: 3000K CCT, CRI>80

DRIVER: integral

9.0 watts, 755 lumens per window

21.6 watts, 1290 lumens per window



L2600W-2-ST/ST
FannyPack XL

Detailed product sheets with photometric data are available for the Steplites illustrated in this overview. www.colelighting.com

C. W. Cole & Company, Inc. 2560 N. Rosemead Boulevard South El Monte CA 91733-1593 Tel. (626) 443-2473 Fax (626) 443-9253