

Restoration

Refurbish • Retrofit • Replicate



Griffith Observatory, Los Angeles CA - Renovation and Expansion Project



Griffith Observatory

In Association with Horton Lees Brogden Lighting Design

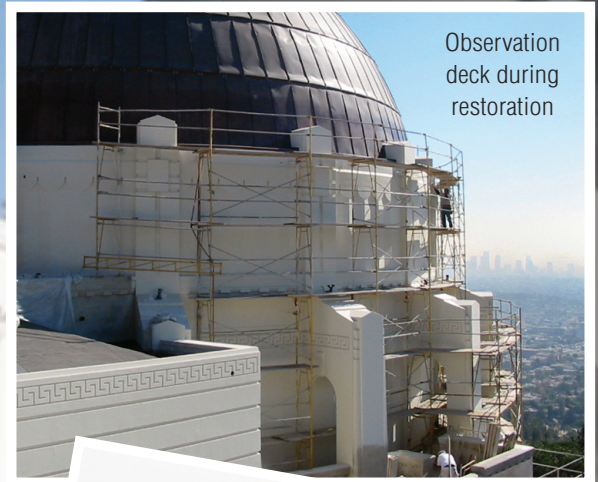
The Griffith Observatory closed in 2002 for renovation and a major expansion of exhibit space. It reopened to the public on November 3, 2006, retaining its art deco exterior.

Directional signage, main entrance lighting and observation deck fixtures, were removed, cleaned, and rewired to function at maximum efficiency. Bronze elements throughout the building, including all wall moldings, ornaments, lighting fixtures, and vent grilles, were removed, cleaned, rewired and given wax finishes before being reinstalled.

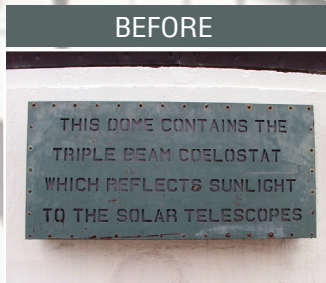
— *Cole Lighting Restoration, Refurbish and Custom Design Project.*



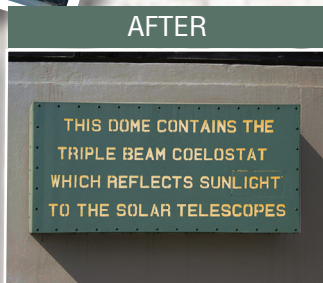
Steplite replacement



Observation deck during restoration



BEFORE



AFTER

