

LIGHTRAIL™

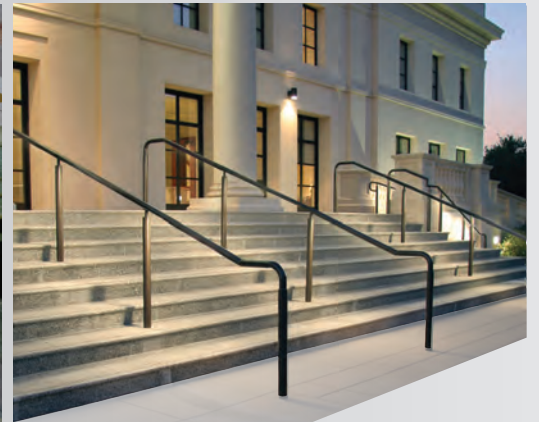
Illuminated Handrails



*LR5 Lightrail -
Huntington Library, San Marino, CA*



*Above -Custom Lightrail -
Pack Square Park, Asheville, NC*



COLE
Lighting

C.W. Cole & Company, Inc.
2560 N. Rosemead Boulevard
South El Monte, CA 91733-1593

Tel. (626) 443-2473

Fax (626) 443-9253

info@colelighting.com

www.colelighting.com

LR5 LED

Description

LR5-LED Lightrail Series is a complete illuminated handrail system, ideal for indoor or outdoor applications such as stairs, ramps, and walkways. The round design provides symmetrical or asymmetrical illumination with dimensions that conform to ADA requirements. Lightrail is offered in post mount or wall mount configurations. Other uses include pedestrian bridge and guardrail lighting.

Construction

- Available in extruded aluminum and formed stainless steel with welded and blended joints for a seamless appearance
- A high impact extruded acrylic lens snaps into place and is further retained by fasteners at each end
- The flat lens design minimizes visible brightness at sides and is available in clear or frosted
- Each rail is tailored to fit existing stairs, ramps, and walkways
- Aluminum rails supplied with a powder coat or anodized finish
- Stainless steel rails supplied with a #4 satin finish, passivated

Electrical

- LED modules are 24 VDC constant voltage at 4.5 watts and 171 lumens per foot. Available in 3000°K or 4100°K color temperatures. Beam spreads in 50°, 65°, and 90° patterns
- LEDs are configured to allow uninterrupted illumination
- Electrical feed locations are pre determined at time of submittal
- LED drivers may be integral in the posts or railing; and may be remote if required
- Dimmable drivers are available upon request

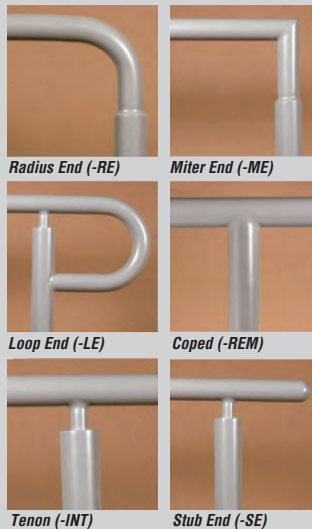
Special Features

- Custom mounting brackets and end treatments are available to meet most design criteria
- Stainless steel cable and glass panel infills available



Santa Monica Place, CA - LR5-LED-SS-INT-RE

End Treatments



Radius End (-RE)

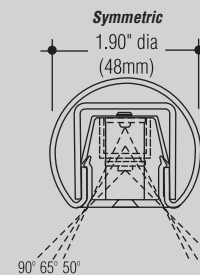
Miter End (-ME)

Loop End (-LE)

Coped (-REM)

Tenon (-INT)

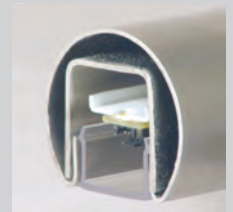
Stub End (-SE)



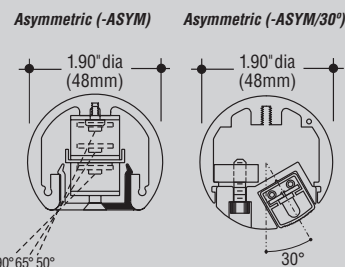
Symmetric

1.90" dia
(48mm)

90° 65° 50°



Formed Stainless Steel



Asymmetric (-ASYM)

Asymmetric (-ASYM/30°)

1.90" dia
(48mm)

90° 65° 50°

1.90" dia
(48mm)

30°



Extruded Aluminum

Catalog Number

Post mounted, integral driver
Post mounted, remote driver
Wall mounted, integral driver
Wall mounted, remote driver

Stainless Steel (-SS)

LR5P-LED-SS-INT
LR5P-LED-SS-REM
LR5W-LED-SS-INT
LR5W-LED-SS-REM

Aluminum (-AL)

LR5P-LED-AL-INT
LR5P-LED-AL-REM
LR5W-LED-AL-INT
LR5W-LED-AL-REM

Options

Baseplate: 5" x 5" x 3/8" (Aluminum)
5" x 5" x 3/16" (Stainless Steel)
baseplate with four 5/8" holes. Add suffix **-BP**.

Frosted Lens: Add suffix **-FL**.

Ends: Add suffix. Stub **-SE**. Miter **-ME**.

Loop **-LE**. Radius **-RE**.

Escutcheon Plates: Add suffix **-ES**.

Asymmetric distribution:

One side blocked. Add suffix **-ASYM**.

30° tilt. Add suffix **-ASYM/30°**

4100°K Color Temperature: (3000°K Standard).
Add suffix **-41K**.

Beam Spread: (Clear Lens, 90° Standard).

50°: Add suffix **-50**.

65°: Add suffix **-65**.

How to Specify

Every Lightrail is custom designed and fabricated to your specific project conditions. Drawings will be submitted on each project requesting specific dimensions to assure proper fit. Plans and elevation drawings are required for pricing and submittal drawing production.

1. Submit catalog number, options, and voltage; (example: LR5P-LED-SS-INT-RE-277).

2. Add special features and requirements necessary to complete specification.



C.W. Cole & Company, Inc.
2560 N. Rosemead Boulevard
South El Monte, CA 91733-1593

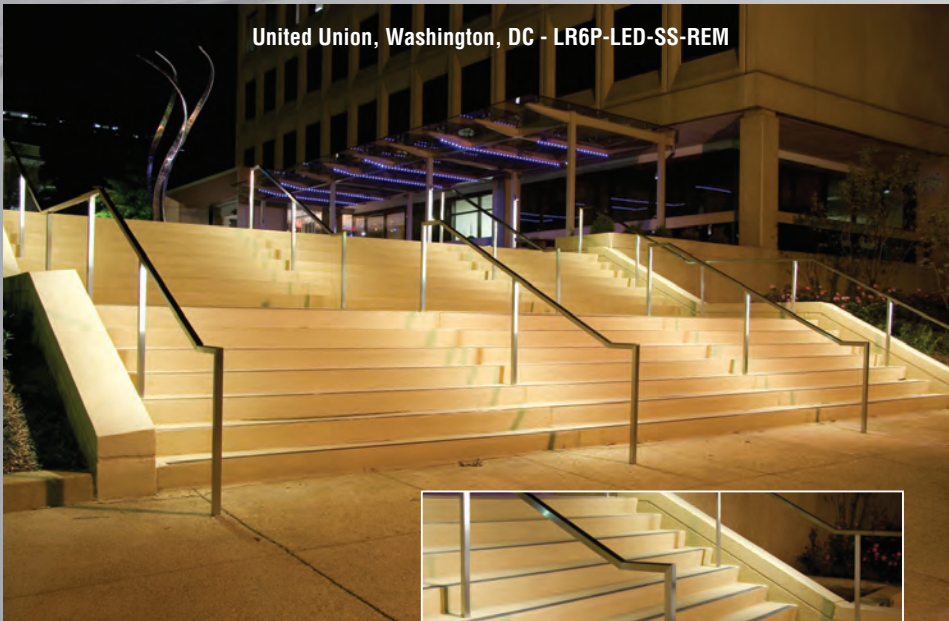
Tel. (626) 443-2473

Fax (626) 443-9253

info@colelighting.com

www.colelighting.com

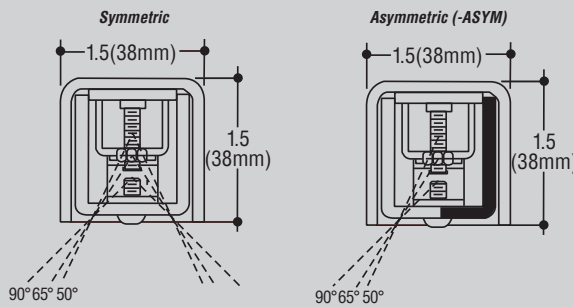
United Union, Washington, DC - LR6P-LED-SS-REM



Extruded Aluminum



Formed Stainless Steel



LIGHTRAIL™

LR6 LED

Description

LR6-LED Lightrail Series is a complete illuminated handrail system, ideal for indoor or outdoor applications such as stairs, ramps, and walkways. The square design provides symmetrical or asymmetrical illumination with dimensions that conform to ADA requirements. Lightrail is offered in post mount or wall mount configurations. Other uses include pedestrian bridge and guardrail lighting.

Construction

- Formed stainless steel with welded and blended joints for a seamless appearance
- The flat lens design minimizes visible brightness at sides and is available in clear or frosted
- Each rail is tailored to fit existing stairs, ramps, and walkways
- Stainless steel rails supplied with a #4 satin finish, passivated
- Other materials available.

Electrical

- LED modules are 24 VDC constant voltage at 4.5 watts and 171 lumens per foot. Available in 3000°K or 4100°K color temperatures. Beam spreads in 50°, 65°, and 90° patterns
- LEDs are configured to allow uninterrupted illumination
- Electrical feed locations are pre determined at time of submittal
- LED drivers may be integral in the posts or railing; and may be remote if required
- Dimmable drivers are available upon request.

Special Features

- Custom mounting brackets and end treatments are available to meet most design criteria
- Stainless steel cable and glass panel infills available.

Catalog Number	Stainless Steel (-SS)	Aluminum (-AL)
Post mounted, integral driver	LR6P-LED-SS-INT	LR6P-LED-AL-INT
Post mounted, remote driver	LR6P-LED-SS-REM	LR6P-LED-AL-REM
Wall mounted, integral driver	LR6W-LED-SS-INT	LR6W-LED-AL-INT
Wall mounted, remote driver	LR6W-LED-SS-REM	LR6W-LED-AL-REM

Options

- Baseplate:** 5" x 5" x 3/8" (Aluminum)
5" x 5" x 3/16" (Stainless Steel) baseplate with four 5/8" holes. Add suffix **-BP**.
- Frosted lens:** Add suffix **-FL**.
- Escutcheon plates:** Add suffix **-ES**.
- Asymmetric distribution:**
One side blocked. Add suffix **-ASYM**.
- 4100°K Color temperature:** (3000°K Standard).
Add suffix **-41K**.
- Beam spread:** (Clear Lens) (90° Standard).
50°: Add suffix **-50**.
65°: Add suffix **-65**.



Claremont-McKenna College, Claremont, CA
LR6P-LED-SS-REM

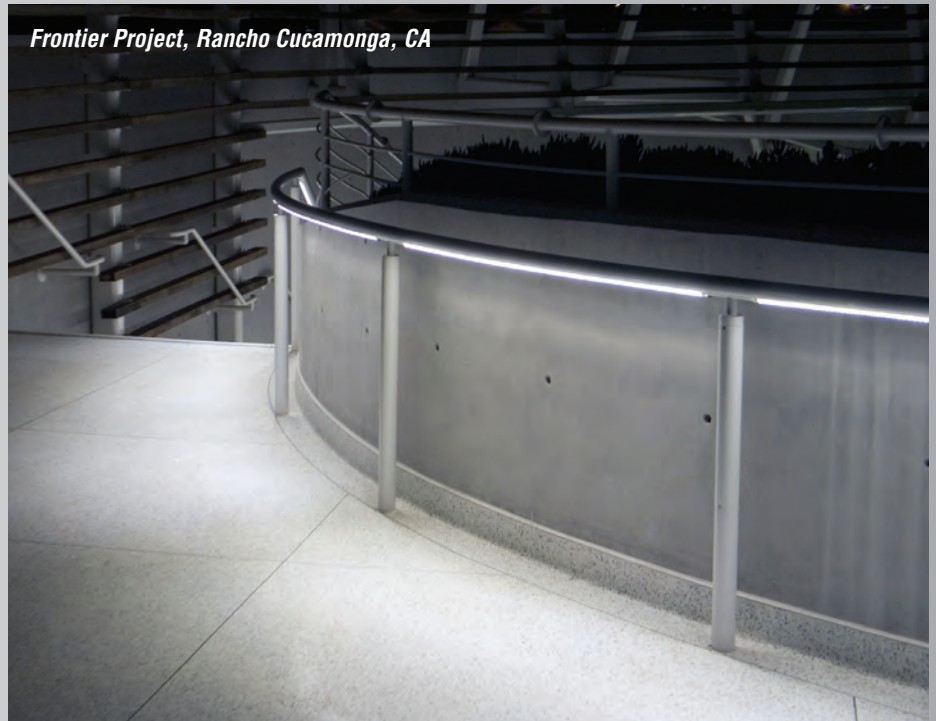


C.W. Cole & Company, Inc.
2560 N. Rosemead Boulevard
South El Monte, CA 91733-1593

Tel. (626) 443-2473
Fax (626) 443-9253
info@colelighting.com
www.colelighting.com



Yankee Stadium, NY



Frontier Project, Rancho Cucamonga, CA



Main Street Bridge, Columbus, OH



Las Vegas, NV



Frontier Project, Rancho Cucamonga, CA

LIGHTRAIL™

Illuminated Handrails



C.W. Cole & Company, Inc.
2560 N. Rosemead Boulevard
South El Monte, CA 91733-1593

Tel. (626) 443-2473

Fax (626) 443-9253

info@colelighting.com

www.colelighting.com